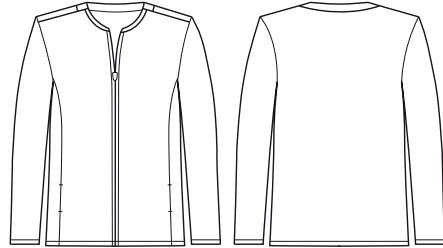




NEW

MENS NOVA ZIP FRONT JUMPER

CO342MJ



COLOURS



GARMENT MEASUREMENTS

SIZE	XS	S	M	L	XL	2XL	3XL	4XL	5XL
½ CHEST* (CM)	53	55	57	59	61	64.5	68	71.5	75
LENGTH FROM HSP (CM)	69.5	71	72.5	74	75.5	77.5	79.5	81.5	83.5
SLEEVE LENGTH - LSP TO CUFF END (CM)	67	68	69	70	71	72	73	74	75

½ CHEST MEASURED 2.5CM BELOW UNDERARM

STYLE F&B

- 2 External zip pockets
- Internal pockets for glasses, ear phones, mobile phone, etc.
- Hanger loop located at centre back neck seam
- Ribbed neck for comfort and softness, designed to sit at the base of the neck to allow collared shirts/polos to be tucked in
- Straight hem finish
- Front zip with chin guard for comfort, when fully zipped

FABRIC COMPOSITION

- Main: 100% Polyester brushed knit fleece with antibacterial treatment
- Rib neck: 100% Polyester
- Subtle melange knit for added interest
- Black Melange can also be used as 'charcoal' offering
- Tran-seasonal garment - layer up in winter, or air-conditioned summers
- Soft against the skin

CARE DETAILS

- Machine wash cold, wash inside out, do not bleach, tumble dry low to medium, warm iron if required, drycleanable.
- Easy-care, wash and wear performance fabric suitable for the most demanding of environments.

MATCH WITH

- The Nova range is the perfect upgrade from the traditional polar fleece
- Suitable for a wide range of industries, including: Healthcare, Transport, Teamwear, Child Care, Events & Venue Crew and Casual Corporate
- Also available in vest CO343MV, and womens jacket CO342LJ and vest CO343LV