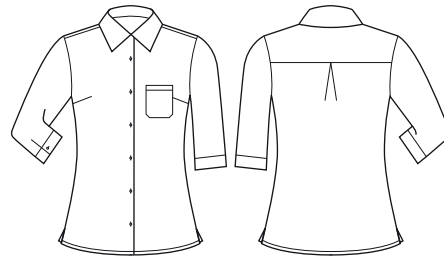


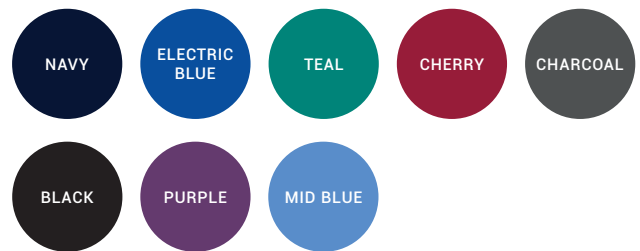


FLORENCE WOMENS 3/4 SLEEVE SHIRT

CS951LT



COLOURS



GARMENT MEASUREMENTS

| SIZE | 4 | 6 | 8 | 10 | 12 | 14 | 16 | 18 | 20 | 22 | 24 | 26 | 28 | 30 |
|---------------|-------|----|------|----|------|----|------|------|----|------|----|------|----|------|
| ½ CHEST* (CM) | 44.75 | 46 | 48.5 | 51 | 53.5 | 56 | 58.5 | 63.5 | 66 | 68.5 | 71 | 73.5 | 76 | 78.5 |

½ CHEST MEASURED 2.5CM BELOW UNDERARM

STYLE F&B

- Slightly longer hem length, can be worn tucked in or out
- Small feminine chest pocket
- Secret bust button between 2nd and 3rd buttons for extra modesty
- ¾ length sleeve perfect for administration
- Dyed to match buttons for minimalistic finish, and allows monogram to stand out
- Classic fit, perfect for all body shapes

FABRIC COMPOSITION

- 94% Polyester 6% Elastane – no treatments on this fabric
- 2 way stretch for extra comfort and ease of movement

CARE DETAILS

- Machine wash warm (40°C max) with like colours, inside out - to hold vibrancy of colours. Do not bleach, hang to dry away from sunlight, do not tumble dry. Cool iron if required, dry cleanable.

MATCH WITH

- Also available in S/S shirt CS947LS and S/S tunic style CS949LS
- Matching Daisy Print available in S/S shirt CS948LS and S/S tunic style CS950LS
- Add Marley Jersey T-top CS952LS in matching colours for wardrobe depth
- Men's coordinating shirts available in Biz Collection - Oasis, Metro, Monaco and Crew Polos

